

INSIDE:

2
Information
Curious George Events

3
Winter/Spring Events

4
Tot Spot Classes
Toddler Rime
First Fridays

5
Home School Classes
Family Classes

6
Members Only Event
Week of the Young Child
Mornings of Fun
Messy Mondays
Volunteer Station
Movie Monday

7
Grants & Gifts
Discover the Spirits Thanks
OSF Children's Hospital

8
A Marvel-ous
Magical Evening

Curious George visits Discovery Center



January 27 - May 13

The insatiable curiosity of Curious George comes to life January 27 at Discovery Center. The temporary exhibit, *Curious George: Let's Get Curious!*TM, introduces young children to Curious George's world and leads visitors on a fun, interactive adventure.

Based on the familiar characters in H.A. and Margret Rey's classic stories, the Curious George exhibit inspires young children's natural curiosity as they explore early science, math and engineering through hands-on interactive play. We are excited that the exhibit signage is in both English and Spanish.

Take a trip to the neighborhood where Curious George lives with his friend, The Man in the Yellow Hat. You and your children will recognize familiar characters and places featured in the classic stories and the television series on PBS KIDS.

The exhibit encourages children to operate wheels to help George climb a fire escape into his apartment building; sort and weigh fruits and vegetables at the produce stand; use science skills to putt a hole of mini golf; have their picture taken with the rocket from George's space adventure (and email it home); build a whirligig and other yard art at the farm; use machines to move materials at the construction site; and visit the Museum within the Museum.

See page 2 for a listing of all our Curious George related events, story times and pajama party!



Curious George Let's Get Curious!

Sponsored Locally By:



Dean Alan Olson Foundation

Media Partner:



Sponsored By:



Admission
General Admission +
Curious George Exhibit
= \$1 Members,
\$11 Public

INFORMATION:

Hours

Monday-Sunday: 10 a.m.-5 p.m.

Admission

Adult/Child: \$8

Children age 1 and younger and Members: FREE!

Membership

CLIMB SuperPass: \$150/year

Family SuperPass: \$135/year

Family Membership: \$90/year; \$170/2 years

Grandparent Membership: \$90/year; \$170/2 years

Caregiver Membership: \$30/year

Group Rates

Discounted group rates are available for tours, classes, museum rentals, and birthday parties. Reservations required.

Contact Us

Phone: (815) 963-6769

Website: www.discoverycentermuseum.org

Staff

Sarah WolfExecutive Director
 Lisa Coen.....Office Manager
 Kyler Hartje.....Exhibits Technician/
 Planetarium Technician
 Michele Larson.....Birthday Party Coordinator
 Cheryl Maggio.....Accountant
 Joyce Mazzola.....Gift Shop Manager
 Sara McKevitt.....Development Director
 Hillary Parks.....Guest Services Manager
 Bruce Quast.....Exhibits Director
 Mike Rathbun.....Associate Director
 Meghan Richards.....Education Specialist/
 Scout Coordinator
 Jenny Rossol.....Early Childhood Educator
 Maggie Ruggerio.....Education Specialist
 Corinne Sosso.....Director of Education
 Sue Stevens.....Volunteer & Special
 Projects Coordinator
 Jim Taylor.....Member Relations Manager
 Ann Marie Walker.....Marketing Director
 Jessica Williams.....Education Specialist

Our Mission

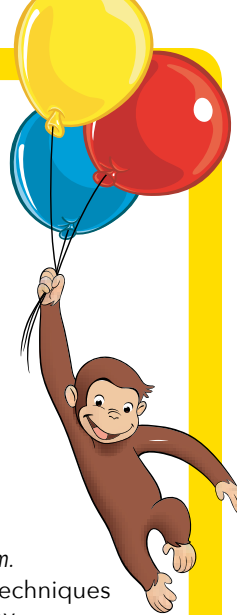
Create opportunities for joyful learning and discovery through hands-on experiences in the sciences and arts.

Special Exhibit Events

Curious George



Let's Get Curious!



Curious George Exhibition Opening

Saturday, January 27; 10:00 a.m.-5:00 p.m.

Transport yourself to the neighborhood where everyone's favorite monkey lives and explore a world of science and engineering. Little ones can build, maneuver, and manipulate in this colorful hands-on exhibition that encourages creativity through direct experience and problem solving opportunities. We'll have curious crafts and fun projects. Special appearance by George along with one of his stories at 10:30 a.m. and 1:00 p.m. Kids will want to stay and play in this comfortable environment as this mischievous monkey leads them on ed-ventures into science! Included with Curious George admission: \$1 members / \$11 public.



Learn to Draw George and Friends

Saturday February 17; 11:00 a.m.-2:00 p.m.

Try drawing techniques presented by professional cartoonist Bruce Quast. Practice cartooning skills and pick up new tips and methods for sketching Curious George and other characters. George will stop by to see your drawings at 12:15 and 1:15 p.m. No registration required. Included with Curious George admission: \$1 members / \$11 public.

Yellow Hat Happening

Saturday April 28; 10:00 a.m.-1:00 p.m.

Wear your yellow hat or come and make one with us. Play with colors and numbers, stack things high, and make things roll! Special appearance by George along with one of his stories at 10:30 a.m. and 12:30 p.m. Included with Curious George admission: \$1 members / \$11 public.

No More Monkeyshines

Sunday, May 13; 10:00 a.m.-5:00 p.m.

Curious George and the Man in the Yellow Hat are moving on after today. Don't miss one last adventure in this exhibition that applauds curiosity as the foundation of science and engineering for young explorers. Join in one more game, solve one more problem, and create one more craft before waving farewell to Curious George. Included with Curious George admission: \$1 members / \$11 public.

Curious George Story Times

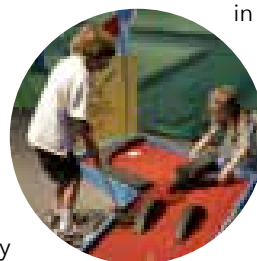
Thursdays, February 1 - May 10; 11:30 a.m.

Join us every Thursday morning in the theater for Curious George stories and activities. Our favorite monkey will drop by for photos and fun!

Monkey around Pajama Party

Thursday, February 8; 5:30 - 7:30 p.m.

\$1 members/\$11 public
Throw on your PJs and visit Discovery Center for an evening of monkeying around! Enjoy sleepy time stories, sing songs, make crazy crafts, and enjoy a special bedtime snack. Meet Curious George and snap a photo with him! Registration required—register online by Wednesday, February 7.



Curious George television series merchandise © Universal Studios. Curious George and related characters, created by Margret and H. A. Rey, are copyrighted and trademarked by Houghton Mifflin Harcourt Publishing Company and used under license. Licensed by Universal Studios Licensing LLLP. All rights reserved.

Winter/Spring 2018 Events

The End is Near!

Sunday, January 7, 1:00-4:00 p.m.



Comets, Asteroids, Meteors Great Balls of Fire, the temporary exhibition, is on it's

closest approach, and will disappear below the horizon on January 14. Take yourself on an astronomical adventure as you climb into a "spaceship" and compare and contrast real data about asteroids, comets, and meteors. Design your own solar system, test the effects of gravity, ID asteroids, and more! Don't let this immersive experience be a near-miss for your family; soon it won't be visible! Admission is free for members and \$10 for public.

Monster Monday

Monday, January 15; 10:00 a.m.-3:00 p.m.



Bwah hah hah hah! From whimsical to frightful, monsters are delightful.

Celebrate the 200th anniversary of Frankenstein with monstrous mayhem, imaginative play, creative creature crafts, and science fun. Explore everyday physics principles, witness the

power of static electricity, and find out if lightning can really bring something back to life! Come dressed as your favorite fiend or wear ogre attire for this mythical magical romp in the place where science meets imagination. It's alive! Included with Museum admission.

Star Wars Sunday

Sunday, January 21; 1:00-4:00 p.m.

Rev up your Speedbike and get ready to join the Rebel Alliance.

Create your own light saber, practice Jedi skills, and evade storm troopers.

Journey through hyperspace to different worlds in the planetarium, re-compile a droid, navigate an X-Wing through the asteroid field, and assist Princess Leia in battling the evil Empire. The force will be with you always.

Galactic attire encouraged. Included with Museum admission.



Chocolate Sundae Sunday

Sunday, February 11; 2:00-4:00 p.m.

\$2 members / \$3 public. Museum admission is extra.

Bring your sweet tooth to this mouthwatering event! Assemble a sundae and raise your spoon while delighting in the tunes of Auburn's Jazz Band. Then put your creative side to work and whip up a heart-felt card or craft at the Valentine creation station. Sponsored by Dean Foods.



Discover Engineering

Saturday, February 24; 11:00 a.m.-3:00 p.m.

Crank up your cranium and see how great it feels to solve problems like an engineer! Dozens of engineering professionals are setting up shop in Museum spaces and invite you to participate in hands-on investigations and brain-bending challenges that relate to the jobs they do right here in the Rockford area. Local high school teams are also on hand, showing off their romping robots. Don't miss this eye-opening opportunity to see what engineers achieve as you make and take some amazing stuff. This perfect conclusion to National Engineers' Week is included with Museum admission. Sponsored by Huntington Learning Center of Rockford; Advanced Machine/Hennig; and TAC Rockford.

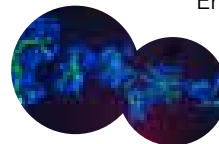


Ag All Around Us

Saturday, March 10;

11:00 a.m.-2:00 p.m.

Roll up your sleeves and get down on the farm! Ask a farmer, peek at live barnyard babies, explore plants and soil, and play with your food. National Agriculture Week is off and running at Discovery Center with cute crafts, earth-loving activities and eye-opening information. Included with Museum admission.



Nano Day

Saturday, March 24; 11:00 a.m.-2:00 p.m.

Discover the many devices in your possession that make use of nano science as you bump elbows with real scientists and take part in hands-on activities and science demonstrations. Explore the many shapes of carbon, mimic the iridescence of a butterfly's wing, compare manufactured materials, and understand how science that's too small to see is shaping today's technology! Included with Museum admission.



Science, Sound, and Music

March 26-30; 11:00 a.m. - 3:00 p.m.

Discovery Center joins in celebrating Leonard Bernstein's 100th birthday with an array of hands-on experiments and investigations. Get splashed by a sound, make your own "telephone", get a feel for vibrations, assemble a musical instrument that really works, and more! We'll also have springtime art and creative crafts for hands of all ages. Included with Museum admission.

Egg Hunt

Saturday, March 31; 10:00 a.m.-2:00 p.m.

Member kids: \$3, Public: \$10 adults, \$12 kids

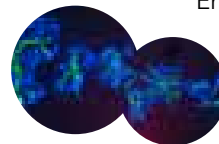
Hop into your favorite Museum and fill your basket with treats as Discovery Center and Burpee Museum team up for double the fun! Kids ages 9 and under can hunt for eggs at 11:00 a.m. and 1:00 p.m., Kids of all ages get creative with adorable art and spring-time craft fun! Enjoy both museums at one great price! Plan to arrive at least 20 minutes before the hunts begin so you don't miss them!



Astronomy Day

Saturday, April 14; 11:00 a.m.-3:00 p.m.

Enjoy the wonder and beauty of the night sky, investigate planets, moon, and sun, and get inspired to learn more during a free planetarium show. Monkey around with gravity, put the solar system in your pocket, navigate the constellations, and more! Included with Museum admission. Sponsored by Astro-Physics and Forest City Gear.



Future Nurse Academy

Saturday, April 21; 10:00 a.m.-2:00 p.m.

Discover what fun it would be to be a nurse as Discovery Center turns into OSF's College of Nursing for kids! Learn how to check X-Rays, take blood pressure, and make the rounds on this day of medical fun. Talk to real nurses and get your hands on actual equipment as you explore a career in nursing! Included with Museum admission. Sponsored in part by OSF College of Nursing.



Tot Spot Classes

Let It Snow

Snow is cold, white and FUN! Learn about the uniqueness of snowflakes. Discover why we have snow and create your own "snowy" art to take home.

Sessions for 3 to 6-year-olds:

- Session 1 Tues., Jan 9; 11:00 - Noon
- Session 2 Wed., Jan 10; 9:30 - 10:30
- Session 3 Wed., Jan 10; 11:00 - Noon
- Session 4 Wed., Jan 10; 1:00 - 2:00
- Session 5 Thurs., Jan 11; 11:00 - Noon
- Session 6 Fri., Jan 12; 9:30 - 10:30

Sessions for 2-year-olds:

- Session 7 Tues., Jan 9; 9:30 - 10:30
- Session 8 Thurs., Jan 11; 9:30 - 10:30

Monkey Business

Satisfy your curiosity about monkeys and get to know a famous one named 'George.' Go bananas playing all kinds of fun games and make a project inspired by our special museum friend.

Sessions for 3- to 6-year-olds:

- Session 1 Tues., Jan 23; 11:00 - Noon
- Session 2 Wed., Jan 24; 9:30 - 10:30
- Session 3 Wed., Jan 24; 11:00 - Noon
- Session 4 Wed., Jan 24; 1:00 - 2:00
- Session 5 Thurs., Jan 25; 11:00 - Noon
- Session 6 Fri., Jan 26; 9:30 - 10:30

Sessions for 2-year-olds:

- Session 7 Tues., Jan 23; 9:30 - 10:30
- Session 8 Thurs., Jan 25; 9:30 - 10:30

Seeing Red

Hearts, firetrucks, strawberries and STOP signs each have the color red. Create a red collage and see what happens when we mix red with other colors.

Sessions for 3 to 6-year-olds:

- Session 1 Tues., Feb 13; 11:00 - Noon
- Session 2 Wed., Feb 14; 9:30 - 10:30
- Session 3 Wed., Feb 14; 11:00 - Noon
- Session 4 Wed., Feb 14; 1:00 - 2:00
- Session 5 Thurs., Feb 15; 11:00 - Noon
- Session 6 Fri., Feb 16; 9:30 - 10:30

Sessions for 2-year-olds:

- Session 7 Tues., Feb 13; 9:30 - 10:30
- Session 8 Thurs., Feb 15; 9:30 - 10:30

Penguins on Parade

Waddle up to find out about these amazing Antarctic birds. How do they keep warm? Can these birds fly? Do they have wings? Create a playful penguin to brrr-r-ring home!

Sessions for 3 to 6-year-olds:

- Session 1 Tues., Feb 27; 11:00 - Noon
- Session 2 Wed., Feb 28; 9:30 - 10:30
- Session 3 Wed., Feb 28; 11:00 - Noon
- Session 4 Wed., Feb 28; 1:00 - 2:00
- Session 5 Thurs., Mar 1; 11:00 - Noon
- Session 6 Fri., Mar 2; 9:30 - 10:30

Sessions for 2-year-olds:

- Session 7 Tues., Feb 27; 9:30 - 10:30
- Session 8 Thurs., Mar 1; 9:30 - 10:30

Shining Shamrocks

Dress in green for this lucky day! Enjoy the fun and fantasy of St. Patrick's Day as we hunt for pots of gold, play with magic fizzing shamrocks and make a totally green project to take home.

Sessions for 3 to 6-year-olds:

- Session 1 Tues., Mar 13; 11:00 - Noon
- Session 2 Wed., Mar 14; 9:30 - 10:30
- Session 3 Wed., Mar 14; 11:00 - Noon
- Session 4 Wed., Mar 14; 1:00 - 2:00
- Session 5 Thurs., Mar 15; 11:00 - Noon
- Session 6 Fri., Mar 16; 9:30 - 10:30

Sessions for 2-year-olds:

- Session 7 Tues., Mar 13; 9:30 - 10:30
- Session 8 Thurs., Mar 15; 9:30 - 10:30

Make Way for Ducklings

Follow downy soft ducklings into an investigation of these fine-feathered friends. Find out why ducks don't get wet and paint a scenic pond that will "quack" you up!

Sessions for 3 to 6-year-olds:

- Session 1 Tues., Apr 10; 11:00 - Noon
- Session 2 Wed., Apr 11; 9:30 - 10:30
- Session 3 Wed., Apr 11; 11:00 - Noon
- Session 4 Wed., Apr 11; 1:00 - 2:00
- Session 5 Thurs., Apr 12; 11:00 - Noon
- Session 6 Fri., Apr 13; 9:30 - 10:30

Sessions for 2-year-olds:

- Session 7 Tues., Apr 10; 9:30 - 10:30
- Session 8 Thurs., Apr 12; 9:30 - 10:30

Off to the Zoo

Lions, tigers, and bears oh my! Let's explore the zoo with our friend Curious George and get to know his animal friends.

Sessions for 3 to 6-year-olds:

- Session 1 Tues., Apr 24; 11:00 - Noon
- Session 2 Wed., Apr 25; 9:30 - 10:30
- Session 3 Wed., Apr 25; 11:00 - Noon
- Session 4 Wed., Apr 25; 1:00 - 2:00
- Session 5 Thurs., Apr 26; 11:00 - Noon
- Session 6 Fri., Apr 27; 9:30 - 10:30

Sessions for 2-year-olds:

- Session 7 Tues., Apr 24; 9:30 - 10:30
- Session 8 Thurs., Apr 26; 9:30 - 10:30

Are You My Mother?

We'll use this classic story to find out about baby animals and their mothers. Then we'll make a special gift for our mom.

Sessions for 3 to 6-year-olds:

- Session 1 Tues., May 8; 11:00 - Noon
- Session 2 Wed., May 9; 9:30 - 10:30
- Session 3 Wed., May 9; 11:00 - Noon
- Session 4 Wed., May 9; 1:00 - 2:00
- Session 5 Thurs., May 10; 11:00 - Noon
- Session 6 Fri., May 11; 9:30 - 10:30

Sessions for 2-year-olds:

- Session 7 Tues., May 8; 9:30 - 10:30
- Session 8 Thurs., May 10; 9:30 - 10:30



Toddler Time

Being one is FUN! Take advantage of this playgroup designed for children ages 12 months to 24 months as we sing songs, read stories and explore interesting materials while meeting new friends! Toddler Time is held from **9:30-10:30 a.m.** this winter/spring on one Tuesday each month, and then repeated on the successive Thursday. Choose from these dates: **Jan. 16 or Jan. 18, Feb. 20 or Feb. 22, March 20 or March 22, April 17 or April 19, and May 22 or May 24.** Enrollment is limited to 10 families. Advance registration is required. To register, follow the link under education classes on our website, or call 815-963-6769. The fee is \$6/family per session. Register now to come each month and save: \$27/family for all five sessions. Toddler Time meets in the Tot Spot classroom (east end of the building).

First Fridays

What could make the Tot Spot Exhibit areas even more engaging? Having Ms. Jenny there to play with! Bring your preschoolers between 11:00 a.m. and 1:00 p.m. on the first Fridays of each month (**January 5, February 2, March 2, April 6, and May 4**). Ms. Jenny will be there with fun activities designed especially for our littlest visitors. No registration needed. Included with regular Museum admission; free for Museum members.

Cost: \$12 Public / \$10

Members (per child, per class)

Registration required; payment must accompany registration. Please visit our website to register or call 815-963-6769.

In our classes for 2-year-olds, children must be accompanied by an adult.

Adults are not required to attend classes for 3- to 6-year olds but are welcome to come in to observe the class.

Home School Classes

Parachute Drop

Wednesday, January 10

When Monsoon rains cause severe flooding in places like Thailand, and people are cut off from important supplies, engineers can help them. Be the engineer and design and test "aid drop packages" that, when dropped from a high place, not only protect what's inside, but are easy to find once they reach the ground.



Cost: \$13 Public / \$11 Members (per child, per class)

Children ages 7 and up

Class times: 10:30 a.m.-Noon

Advance registration required. Payment must accompany registration. Registration closes 5:00 p.m. Friday the week before class. To register, call (815) 963-6769 or drop by the Discovery Center Museum office during normal business hours. Cancellation policy: Refunds are available through the close of registration, minus 10%. Discovery Center reserves the right to cancel events; in which case, a full refund will be issued.

Bungee Jump

Wednesday, January 24

How long should a bungee cord be?—too short: boring; too long: ouch! Take an engineering design challenge and model a bungee jump using a Barbie® doll and rubber bands. The number of rubber bands, counts, so we're also doing the math. (Disclaimer: No dolls will be injured in the course of this class.)

Candy, Chemistry, & Calculations

February 14

How many licks does it really take to get to the center of a Tootsie Pop? What puts the pop in pop rocks? Perform a number of sweet science experiments as we use chemistry to make gummy worms, investigate osmosis using gummy bears, and more!



Let them eat π

Wednesday, March 14

Discovery Center welcomes Professor Wise (a major math nerd from Rasmussen College) for this delicious Pi(e) Day extravaganza! Cleverly calculate a circumference, determine the diameter, and reduce to reach the radius as we mess with circles. Then get ready to measure and calculate the filling of a celebratory mini pie that you can take home!

CSI: Discovery Center

Wednesday, March 21

Hone your detective skills as you study the science of fingerprints, analyze DNA, and take apart chemicals to identify a sample in this enigmatic adventure. Crack a code and exercise your powers of observation and deduction to solve our pretend crime!

Dissection Lab: Probing into Owl Pellets

Wednesday, April 11

Owls puke what they don't digest. What you can't digest goes all the way through your system and comes out the "other end". Compare and contrast the digestive designs of owls and us as you take apart real owl pellets and discover where they come from and what's inside. Limited ick factor: perfect for experienced anatomists and dissection beginners.



Dive into Density

Wednesday, April 25

From Jupiter's colored bands to submarines, we're delving into density, viscosity & miscibility. Find out about floating, layer liquids and determine how density makes a dent in the way light bends. Use buoyancy to defeat gravity in a boat-building showdown. Then concoct a Shirley Temple to demonstrate a delicious application of floating fluids! YUM!

Family Class

We request one adult for every two children.

D'Egg-Orating

Saturday, March 31; 1:00-2:30 p.m.

Discover how easy it is to create beautiful Easter Eggs! Enjoy an egg-cellent snack as you experiment with several techniques including iridescence, stained glass, appliqué and more. Take all the fun and the beautiful eggs;

leave the prep work and clean up to us!

We supply one dozen hard boiled eggs plus dyes and materials for each child. Bring your own additional eggs if you choose. Recommended for ages 4 and up.

\$8/Member child;
\$12/Public child;
adults no charge.



One adult required for every two children.

Preregistration required. Payment must accompany registration. Ages, fees, and times vary. Registration closes 5:00 p.m. Wednesday before class. To register, call (815) 963-6769 or drop by the Discovery Center Museum office during normal business hours. Cancellation policy: Refunds are available through the close of registration, minus 10%. Discovery Center reserves the right to cancel events; in which case, a full refund will be issued.

We tweet!

Follow
@DiscovCenMuseum
now!



Pin with us!

Discovery Center has lots of great ideas on Pinterest on subjects such as STEM activities; science activities for kids; holiday crafts and experiments; science books for kids; and more.

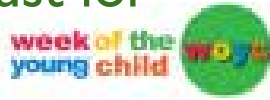


Discovery Center is on Facebook

Check us out and "like" us today!



Special activities just for preschoolers



Celebrate *Week of the Young Child* (April 16-20) at our story time on Thursday, April 19 from 11:30 a.m. to 12:00 p.m. in the theater. A firefighter from the Rockford Fire Department will be our special guest reader, and our favorite monkey, Curious George, will be there too!

Then join us on Saturday, April 21 from 10:00 a.m. to 1:30 p.m. at Heartland Community Church (1280 South Alpine Road) for the annual *Early Childhood Family Fun Fair*. This event is FREE to the public and includes live entertainment, activities for young learners, a bouncy house and community resources for families. Drop by the Discovery Center Museum table for hands-on fun and a few surprises! You'll also learn about the many classes, camps and activities we offer our youngest visitors (ages 12 months - 6 years). You can discover more by visiting our website and click on Education-Tot Spot.

Mornings of Fun

We invite children with disabilities and their immediate families to experience Discovery Center's multisensory exhibits and activities free of charge before the museum opens to the general public.

Join us from 9:00 to 10:00 a.m. on Saturday, May 12. A healthy snack will be served at 10:00 a.m., and families are welcome to stay and play after the museum opens to the public. Advance registration is required. To receive free admission, please visit our website to reserve a spot for your family.



Messy Mondays



Enjoy special theme-focused art projects in our Art Studio. Dates occur on federal and school holidays and throughout the summer. Messy Mondays are from 11:00 a.m. to 3:00 p.m. and are included with museum admission. No advance registration required.

Fall Dates:

- Monday, February 19 Paintsicles
- Monday, April 2 Bouncy ball painting
- Monday, May 28 Bubble wrap roller printing



Members Only Event

Saturday, January 27; 8:30 a.m.

Enjoy this special members' preview opportunity to explore the new *Curious George: Let's Get Curious* exhibition, have your photo taken with Curious George himself, and enjoy a yummy snack. This event is FREE to Members. Please RSVP to 815-963-6769 or email rsvp@discoverycentermuseum.org.

Eagle Scout creates volunteer station

On Saturday, November 18 the volunteer area of the museum received a makeover!

As part of his Eagle Scout badge, Jed Wooldridge designed, built and installed a new volunteer check-in desk. The new desk includes drawers for volunteer nametags, lockers, a dry erase board, hooks for volunteer aprons and coats, a corkboard, a photo display area and a countertop for sign-in sheets, announcements and volunteer snacks.

Jed has been a Y.E.S. volunteer since 2013 and approached Discovery Center with his idea almost two years ago. During the past 22 months, he presented his idea to the Boy Scout Council, raised money for the project, designed the desk, purchased materials, supervised other scouts as they worked and spent over 60 individual hours building, sanding and painting the final product. The end result is awesome and much appreciated!



Jed Wooldridge (2nd from the left) is a member of Boy Scout troop 619 (Rockton) and has been involved with scouting for the past 10 years.

Movie Monday Film Series

Monday, March 19, 2018

Hosted by Discovery Center Museum and Rockford Art Museum

711 N Main St, Rockford; in the theater

Doors Open 6:30 p.m., \$5 cover, cash bar

Film begins at 7 p.m.

Monkey Business: The Adventures of Curious George's Creators

We all know Curious George. But what about his creators, Hans and Margret Rey? From fleeing Nazi held Paris on handmade bicycles to encounters with exotic animals in Brazil, the Reys lived lives of adventure that are reflected in the pages of one of the most treasured children's book series of all time.

We have birthday parties down to a science!

Our fun-filled, hassle-free parties begin at just \$125 for Non-Members and \$113 for Members and include invitations, cupcakes, punch, exploration time in the Museum and more! Special activity and pizza parties are available for additional fees. Party themes include Princess, Outer Space, Animals, Superhero, or Museum Choice (depending on temporary exhibition themes).

Please check our website for more details and call (815) 963-6769 to book your party!

Grants & Gifts News

August 22 through December 15, 2017

We thank the following donors for their generous support of Discovery Center exhibits, events, educational programs and operations.

Grants, Sponsorships & Corporate Donations

- Woodward - \$152,400 - 2 Year STEM Educational Programming
- Kjellstrom Family Foundation - \$25,000 - Tot Spot Nature Space - Legacy Gift
- ComEd - \$20,000 - Power of Electricity Gallery exhibit sponsor
- OSF HealthCare Children's Hospital of Illinois - \$19,100 - Tot Spot Medical Role Play Exhibit
- Kiwanis Club of Rockford - \$10,000 - Great Balls of Fire exhibit sponsor
- **Curious George Sponsors:**
 - Dean Alan Olson Foundation - \$5,000
 - Lowe's Distribution Center - \$5,000
- Gloyd Family Foundation - \$3,000 - Donation
- OSF College of Nursing - \$1,000 - Future Nurses Academy event sponsor
- Thermo Fisher Scientific - \$1,000 - Smashing Pumpkins & Black Light Friday event sponsor
- **Astronomy Day event sponsors:**
 - Astro-Physics - \$500
 - Forest City Gear - \$500
- **Discover Engineering event sponsors:**
 - Advanced Machine Engineering/Hennig - \$500
 - Huntington Learning Center - \$500
 - TAC Rockford - \$500
- **Discover the Spirits sponsors:**
 - Chartwell - \$500
 - Daley Automation - \$500
 - HolmstromKennedy - \$500
- OSF HealthCare - \$500 - Countdown to Fun event sponsor
- Kohl's - \$500 - Volunteer Program
- Cincinnati Tool Steel Co. - \$50 - Corporate Donation
- AmazonSmile Foundation
- Schnucks
- Thrivent Financial
- WTVO - Curious George exhibit & A Marvelous Magical Evening - In-Kind Media Sponsor

If you are interested in partnering with Discovery Center to support an event, program or exhibit, please contact Sara McKevitt at 815-972-2834 or at the following address: saram@discoverycentermuseum.org.

You can also donate online to support Discovery Center Museum exhibits, programs, classes and outreach at www.discoverycentermuseum.org. Click on the DONATE button on the home page. Thank you for your support!

OSF Children's Hospital

In October, we added a new Tot Spot role play area -the OSF Children's Hospital. It encourages youngsters to be the ones to ask, "Where does it hurt?" and helps introduce them to what doctors and medical professionals do. We love watching our youngest visitors drive the ambulance, perform procedures in the patient exam room, apply casts in the orthopedic area, and care for babies in the nursery. Many thanks to OSF Children's Hospital of Illinois for sponsoring this wonderful new exhibit area!



New role play area coming to Tot Spot this Spring

Discovery Center is designing a new play space for Tot Spot that will introduce children to the natural world. This new indoor "outdoor" area will include a two-story tree house and a cave perfect to share with a furry friend. The area will also feature a pond for fishing, a bridge to cross and log to crawl through, animal capes to wear, a campfire complete with marshmallows and hotdogs, and more.

Many thanks to all who supported *Discover the Spirits!*

Thank you to all who attended this special evening on October 13 for adults to play in the children's museum. With your help and support, we raised over \$16,000 that will aid in keeping admission costs low and providing award-winning programs and exhibits for all to enjoy! We continue to be one of Rockford's gems and we thank all the sponsors, donors and guests that evening. Your support helps keep this "gem" shining!

We couldn't have made the evening possible without the help of our volunteers! Our Discover the Spirits Auxiliary Committee members dedicated many hours to plan and successfully execute another great event this year! **Thanks to:**

Kerry Beaulieu
Audra Capriola

Christina Elbers
Julia Kindler

Catherine Povalitis
Carol Wright

Thank you to our event sponsors:

Illinois Bank & Trust
Savant

Rock Valley Credit Union
SwedishAmerican
Chartwell Agency
Colyle-Kiley Insurance

Daley Automation
HolmstromKennedy
Rockford Bank & Trust

Discover the Spirits In-Kind Supporters:

Artale Wine Co.

Julia Kindler Design

Bruce Quast - cartoonist

Baci's Kitchen

Lino's

Reflex DJ Service

Frank Calvagna & Vince

Lucha Cantina

Rush Creek Distillery

Chiarelli

Meridian

Shedd Aquarium

Carl Cole - Sounds of Good

Nothing Bundt Cakes

WTVO/WQRF

News

Pig Minds

Fleet Feet

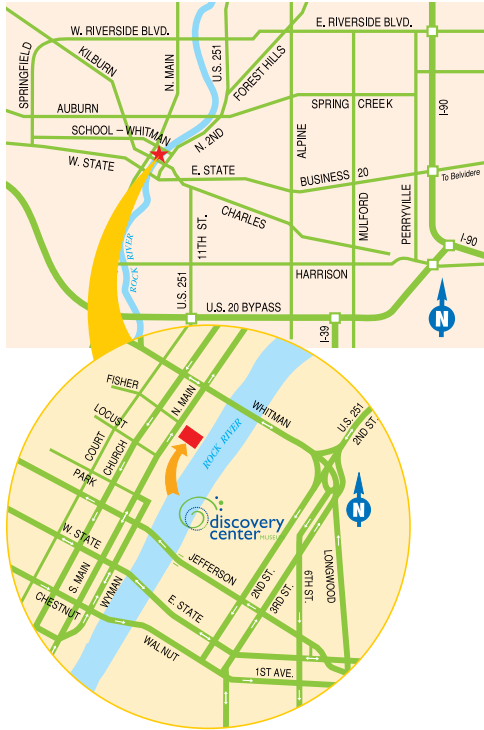
Pinnon's Meats





At Riverfront Museum Park
 711 North Main Street
 Rockford, IL 61103
 815.963.6769
www.discoverycentermuseum.org

Non-Profit Org.
 U.S. Postage
 PAID
 Rockford, IL
 Permit No. 1011



Address Service Requested

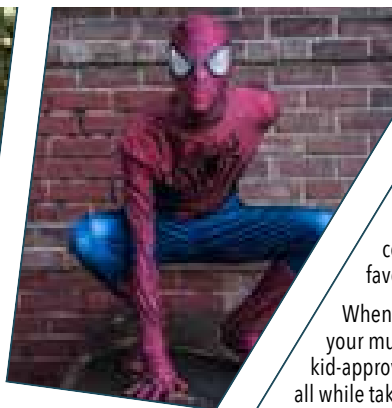


A MARVELOUS Magical EVENING

Saturday, June 24; 6:00-9:00 p.m.

Tickets: \$30/person
 VIP Tickets: \$50 /person
includes a group photo with ALL princesses and/or superheroes, among other VIP activities

GET THEM BEFORE THEY DISAPPEAR!
 Order online at DiscoveryCenterMuseum.org



Once Upon a Time... the classic beginning to any story, right? On June 24, fantasy comes to life as your child comes face-to-face with their favorite princesses and superheroes!

When can you sing along with tiara-clad princesses, flex your muscles with caped superheroes, enjoy scrumptious kid-approved food, and help your favorite Children's Museum, all while taking pleasure in a marvelous magical evening? During Discovery Center's brand new fundraiser this summer!

Costumes are encouraged as you test your superpowers, decorate a cape, sing, dance, and sample sweet confections at the candy buffet while you let your imagination run wild.

Princess fun for all ages includes being silly in the "snow", fashioning a sparkling light-up wand, and playing in a mermaid's tide pool. Superhero fans will find themselves strong enough to lift a parent, and practice seeing colors that aren't really there using X-ray!

Meeting and taking your photo with your favorite costumed characters isn't all that's happening on this enchanted evening! Kids can get zapped by lightning in Thor's Thunder Show, feel the chill in the Icy Extravaganza Event, and hiss at the villains during an intimate planetarium presentation featuring a hero and princess in the night sky.

Get your reserve tickets today for this whimsical adventure and help Discovery Center transform this night of family fun into an investment in learning. Proceeds benefit Discovery Center's exhibits and educational programs for children across the region.

You'll encounter *Enchantment* & **EXCITEMENT** around every corner!